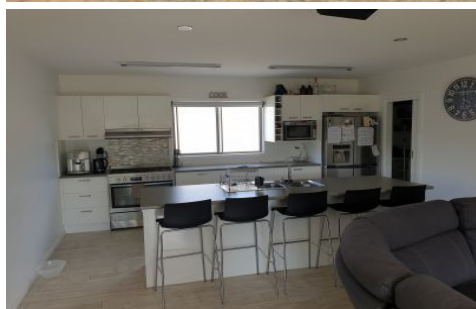




kate

reality



453 Delmore Road Wattle Hill TAS

3  2 

This stunning 3-bedroom, 2-bathroom modern home boasts luxury. Situated on 2 acres of low maintenance land in a rural location this fully fenced property has all the modern amenities that one would hope for.

View : <https://www.katestoreyrealty.com.au/lease/tas/hobart-southern/wattle-hill/residential/house/8091773>

The large open-plan lounge and kitchen area is spacious and looks out over the deck to the private rural setting behind. The kitchen is a chefs delight with gas stove top and large oven, extensive cupboard space and inbuilt wine rack, large island bench and walk-in pantry.



Alison Parker
03 6265 3000

The main bedroom includes a walk-in wardrobe with inbuilt shelves and shoe racks which flows through to the en-suite. The remaining 2 bedrooms have built-in wardrobes. Large separate laundry leading out into the fully enclosed courtyard. Large double garage, 2 large tanks + fire tank, fully fenced property.