



kate

reality



26 Elise Drive Dodges Ferry TAS

4 2 6

Nestled amidst the picturesque Southern Beaches, this modern masterpiece epitomizes serene coastal living.

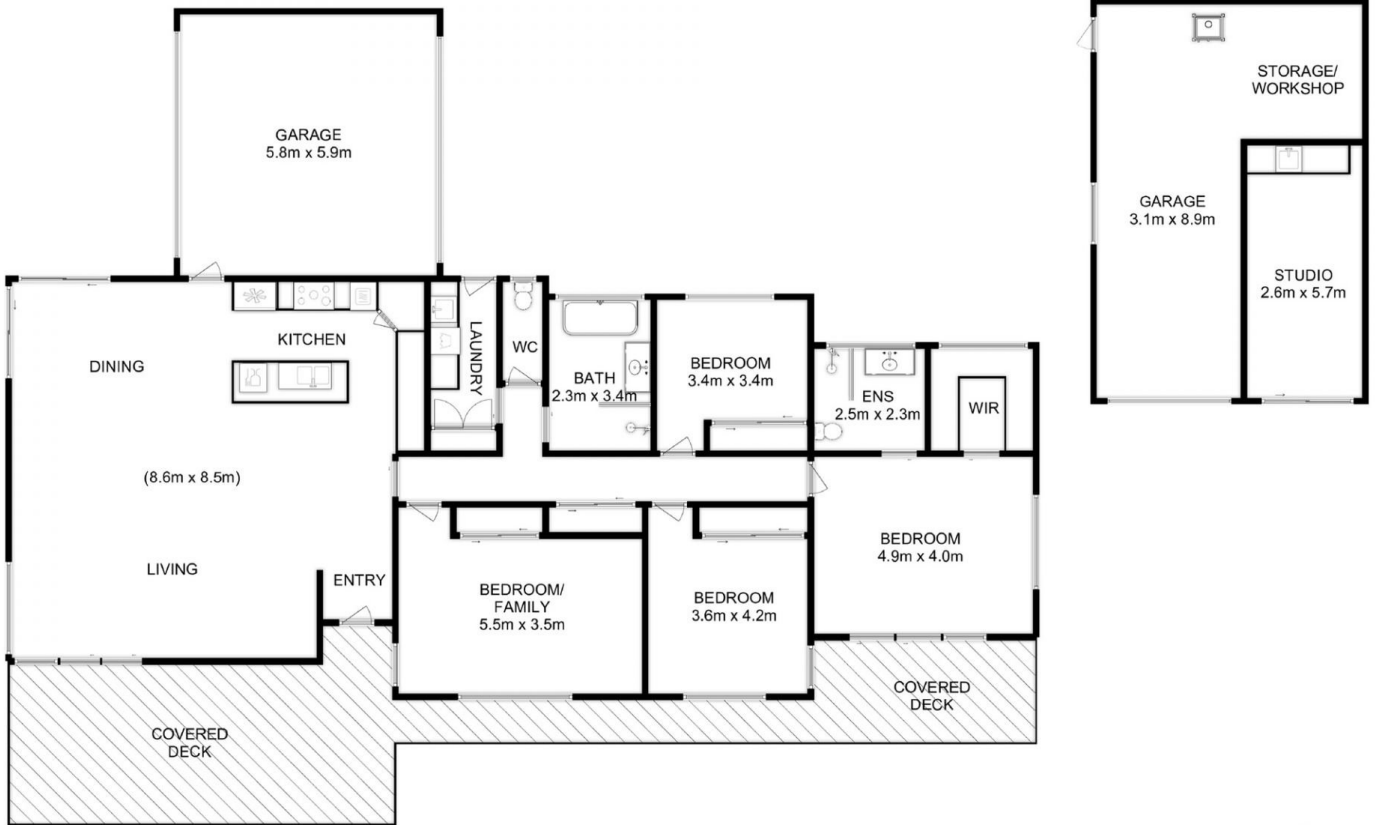
Built in 2018, this residence exudes elegance with its resort-style open plan living, high ceilings, and seamless indoor-outdoor flow, designed to embrace the natural beauty and bathed in all-day sun. Step inside to discover a sun-drenched living space, where expansive windows create an atmosphere of airy elegance and a sneaky water view.

Boasting four generously sized bedrooms with built-in wardrobes, including a master retreat with a walk-in robe, the home offers ample space for family and guests. Two large bathrooms feature modern amenities, including back-to-wall freestanding bath and floor-to-ceiling tiles, providing a spa-like experience in the comfort of home.

Price : Offers Over \$1.1 Million
Building Size : 191 sqm
Land Size : 1898 sqm
View : <https://www.katestoreyrealty.com.au/sale/tas/hobart-southern/dodges-ferry/residential/house/8070324>



Emily Collins
03 6265 3000



Total Approx. Floor Area (inc. Garage attached): 235 sqm
 Total Approx. Outbuilding Area : 54 sqm

All measurements are internal and approximate.
 This plan is a sketch for illustration, not valuation.
 Produced by Open2view.com