



kate

reality



34 Tasman Highway Sorell TAS

3 2 4

Welcome to 34 Tasman Highway, Sorell—a delightful 3-bedroom, 2-bathroom home perfectly positioned on a generous 1094 sqm flat block. This property offers a blend of comfort, space, and potential, making it a must-see for all buyers.

As you step inside, you're greeted by a sunny and inviting living area that immediately feels like home. The master bedroom is a true retreat, featuring a walk-in robe and a private ensuite. The other two bedrooms are generously sized, each with built-in wardrobes, ensuring ample storage space. Both bathrooms have been recently updated, with the main bathroom boasting a walk-in shower and a bath, perfect for relaxation. Additionally, the property features a separate laundry for added convenience.

The kitchen is a chef's delight, offering plenty of cooking

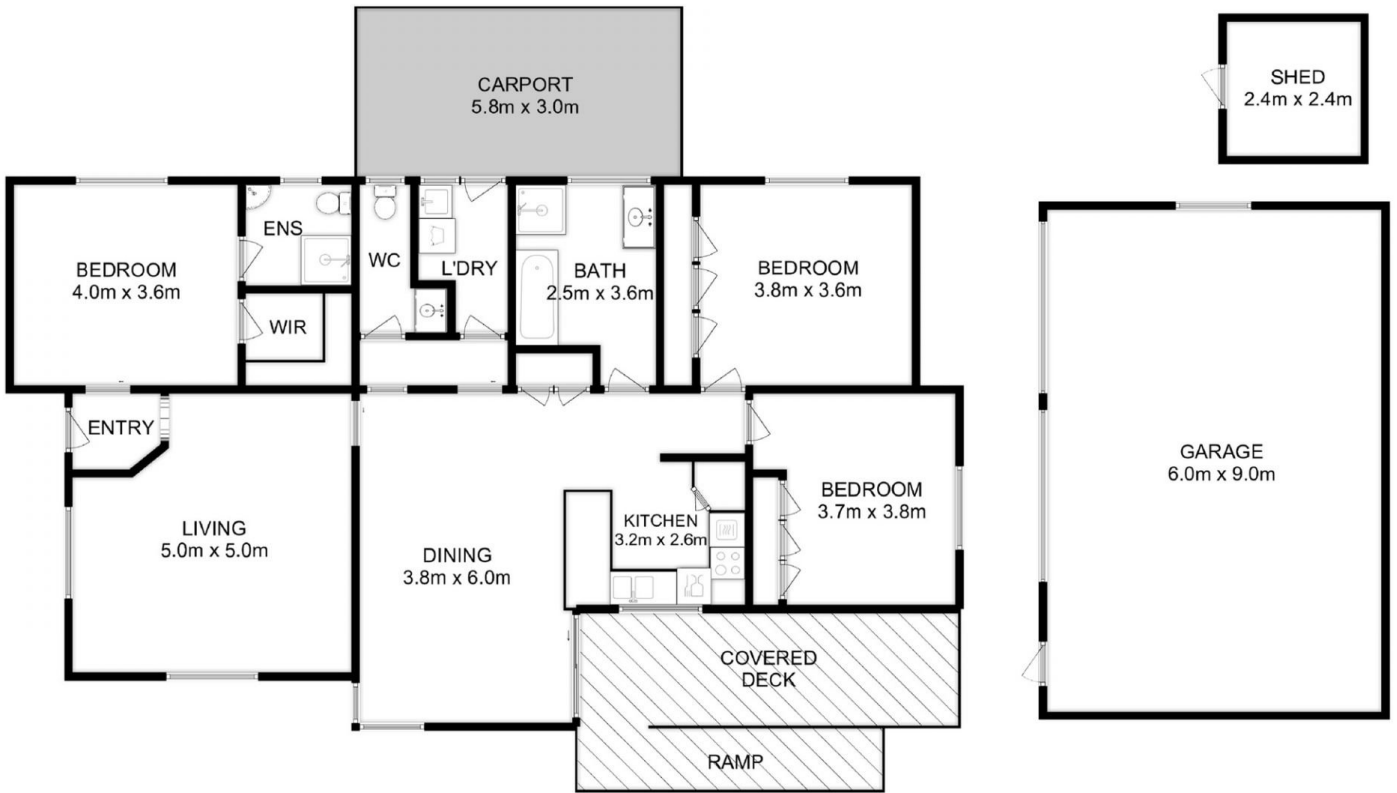
Price : \$680,000 plus
Building Size : 142 sqm
Land Size : 1094 sqm
View : <https://www.katestoreyrealty.com.au/sale/tas/hobart-southern/sorell/residential/house/8051918>



Holly Johnson
0400 653 488



Emily Collins
03 6265 3000



Total Approx. Floor Area : 142 sqm
 Total Approx. Outbuilding Area : 60 sqm

All measurements are internal and approximate.
 This plan is a sketch for illustration, not valuation.
 Produced by Open2view.com

