



kate

reality



2/3 Oakes Court Sorell TAS

10 🚗

Nestled in the heart of one of Southern Tasmania's rapidly expanding suburbs is Heath's Tyres, a cornerstone of quality service and reliability in the region for over 8.5 years.

This leasehold business presents an unparalleled opportunity.

With its well renowned reputation that extends beyond Sorell to encompass clients from the East Coast, Nubeena, and Port Arthur, the Hobart Airport and Cambridge.

Heath's Tyres is primed for continued success. Currently operating five days a week with the added convenience of Saturday mornings, this thriving enterprise is currently staffed by a couple of full-time and casual personnel.

- Established for over 8.5 years, with a solid reputation for quality and affordable service.
- Strategically located in one of Southern Tasmania's

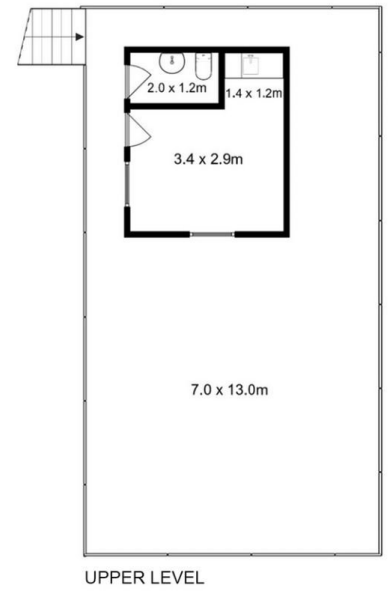
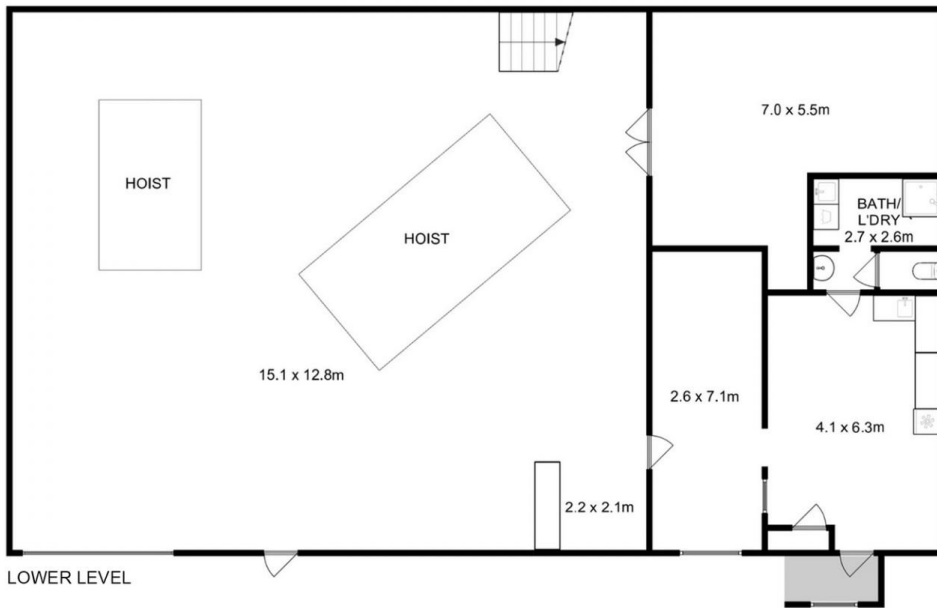
Price : Offers Over \$585,000 Plus S.A.V
Building Size : 379 sqm
Land Size : 420 sqm
View : <https://www.katestoreyrealty.com.au/sale/tas/hobart-southern/sorell/commercial/other/7991255>



Kate Storey
03 6253 6095



Sophie Walden
0362653000



Total Approx. Lower Floor Area : 288 sqm
 Total Approx. Upper Floor Area : 91 sqm

All measurements are internal and approximate.
 This plan is a sketch for illustration, not valuation.
 Produced by Open2view.com

