



kate

reality



8 Abel Avenue Port Arthur TAS

2  1  1 

This much-loved home filled with comfort and charm is ready for new owners. Inside there is a reverse cycle heat pump and at the heart of the home is the Tasmanian essential wood heater for ambience and comfort all year round.

The easy care kitchen flows to the dining room and a great size lounge and study area. There are two bedrooms with the option to adapt layout for the creation of a second living room.

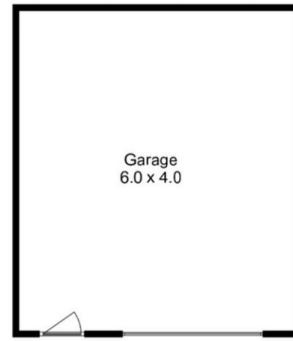
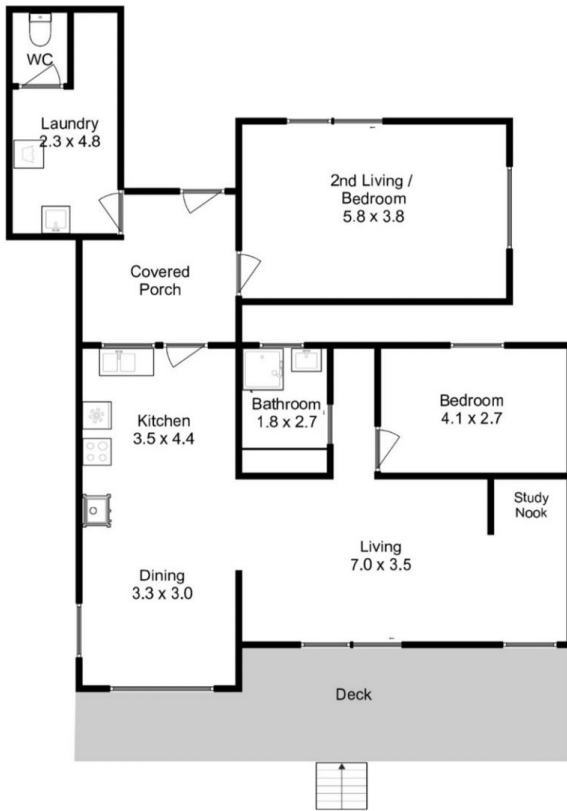
The bathroom has been recently renovated and has beautiful blackwood features.

Outside you will find an impressive 30.0sqm shed, stunning established gardens and secure veggie garden on a flat 837sqm block.

Price : \$ 387,000
Building Size : 125 sqm
Land Size : 837 sqm
View : <https://www.katestoreyrealty.com.au/sale/tas/hobart-southern/port-arthur/residential/house/6255035>



Niahn Palmer
03 6253 6095



Floor area approx 125sqm

All measurements are internal and approximate
 This plan is a sketch for illustration not valuation
 Produced by open2view.com for Kate Storey Realty