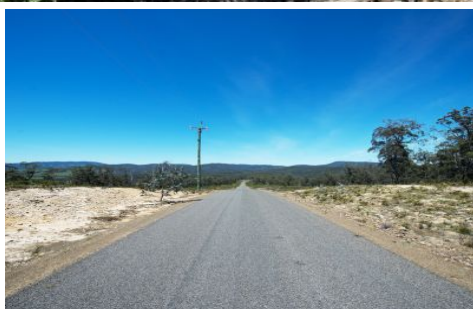




kate

reality



## Sloping Main

Imagine living in Tasmania at one of its most beautiful holiday destinations. To see more click on the virtual tour link: [www.realimages.net.au/swr8/swr8.html](http://www.realimages.net.au/swr8/swr8.html)

Welcome to Five Islands Estate on Heathy Hill, Gwandalan Road where you can choose from one of the remaining blocks of land on offer and enjoy total privacy. You can relax on your own generous parcel of land of approx. 50 acres. Each allotment has gently sloping land with a 1-hectare building envelope and potential for dam sites. Plenty of room to build in complete privacy (stca).

Escape to this beautiful coastal land and relax in harmony. The Peninsula offers a variety of family-friendly beaches and surf beaches with Roaring Beach being one of Australia's finest. Nature at its best surrounds you. Just picture yourself, sitting back, watching the grapes ripen,

**Land Size** : 202343 sqm  
**View** : <https://www.katestoreyrealty.com.au/sale/tas/hobart-southern/sloping-main/residential/and/5744675>



**Kate Storey**  
**03 6253 6095**