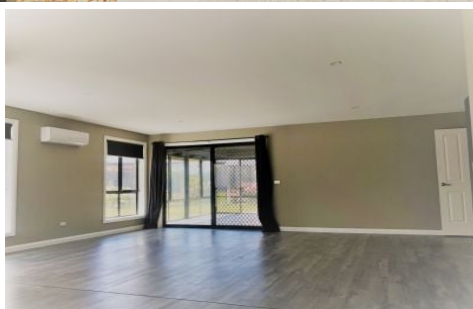




kate

reality



20 Amelia Court Sorell TAS

3 2 2

This beautiful home in a quite cul-de-sac in Sorell offers a sunny large combined dining and lounge area with reverse cycle heat pump. Located off the lounge area is a large sun-room to relax and enjoy a cup of tea while watching the children play.

The kitchen is a modern design, including a dishwasher and an abundance of cupboard space. The kitchen leads on to the separate laundry area, followed by the electric garage - allowing you to skip the rainy weather and drive straight inside. The home offers 2 large bedrooms a master bedroom with en-suite. All bedrooms contain built-in wardrobe space.

The main bathroom provides separate shower and bath with a separate toilet. In addition to the garage there is also a large carport area

Price : \$600.00 pw

View : <http://www.katestoreyrealty.com.au/lease/tas/hobart-southern/sorell/residential/house/8078213>



Alison Parker
03 6265 3000